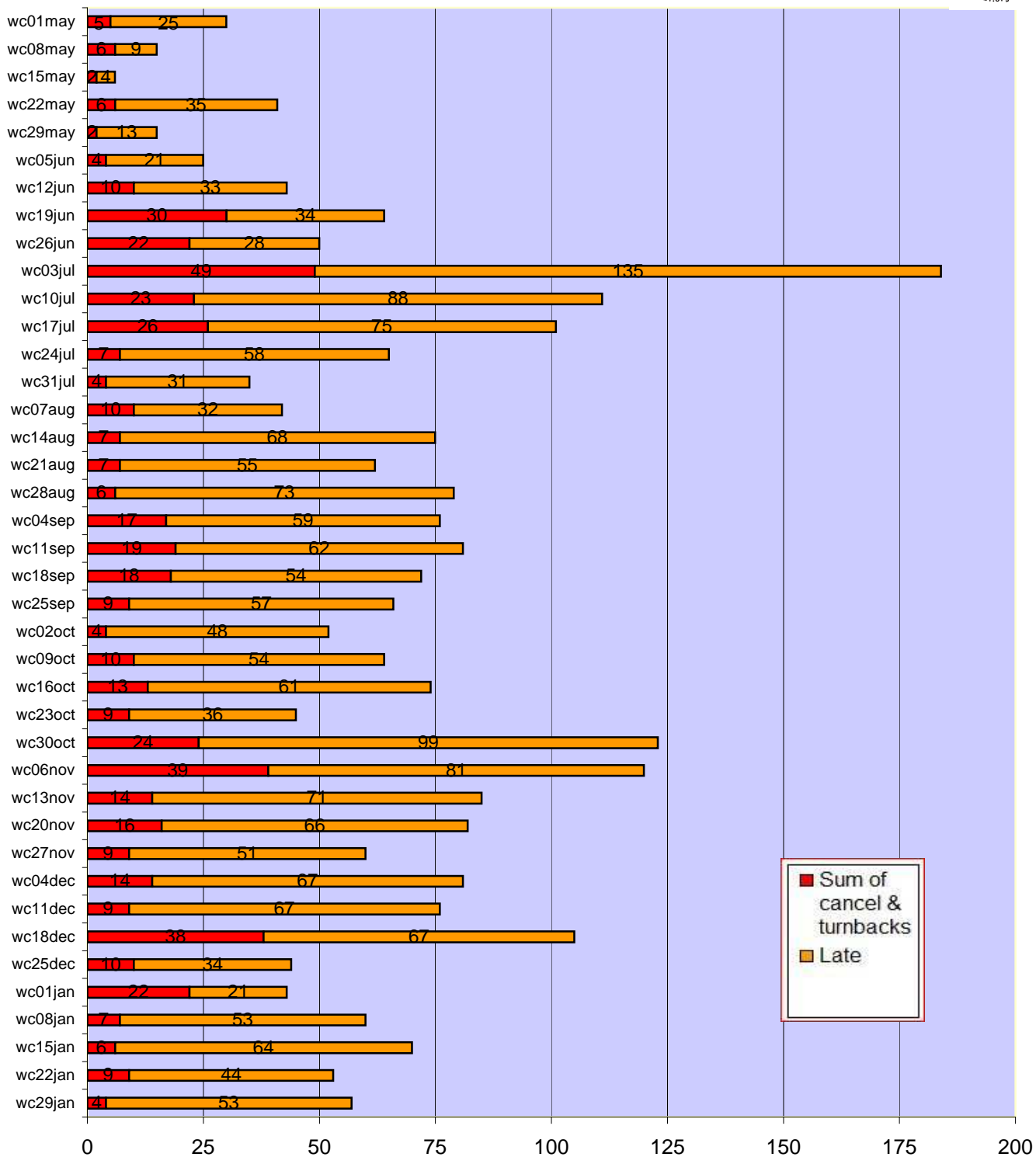


Number of cancelled, turnback or late train services (by week)

Severn Beach Line: 1st May 2017-4th February 2018



Weeks: Monday-Sunday as indicated by week commencing

"Late" = train service 5 or more minutes late on arrival at final destination

"Cancelled" = cancelled throughout

"Cancelled partial" = missed some schedule stations

"Turnback cancel" = turned back prior to (or started after) scheduled stations

"Total turnbacks & cancellations" = includes all cancelled and all turnbacks

From baseline 316 Severn Beach Line services per week*, 5*50 weekdays, 46 on Saturdays, 20 on Sundays**

*Fewer during bank hols, Filton Bank blockade (18-19 Nov) & Bath Xmas Mkt & SBL engineering (w/es Nov/Dec)

**Summer Sunday service increases from 20 to 26 (inc late summer only BRI-CFN-BRI) from 21 May-10 Sept

Compiled for FOSBR by TM, collated by CJD