

Directions - Section 1

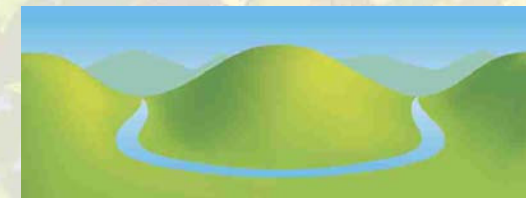
The Inn at Freshford – The Cross Guns

- Turn right out of the car park, over the bridge and follow the road round to the right.
- After 30yds, cross the stile on the right signposted “Public Footpath” and follow the path across the fields towards the buildings ahead of you.
- At the far side of the field, beside the derelict mill, cross the stile and turn left, heading up the narrow road until you reach the top.
- At the top of the road turn right, down the narrow lane, signposted “Iford (Only)”. After 0.5 mile you will reach Iford.
- Keeping the large Manor House to your left and the river to your right, continue straight ahead for 0.5 mile up the steep hill towards Westwood.
- Upon reaching the “Iford Hill” sign at the top, bear right along the road towards the village.
- Take the first left turn opposite the bus stop and head up “The Pastures”, following the “Public Footpath” sign.
- Take the 2nd turn on the left, beside house no.41 and follow the narrow public footpath between nos. 45 and 47, between the fencing panels.
- After climbing down the stile at the end of the footpath, turn right.
- Upon reaching Westwood Nursery and a red telephone box on your right, take the left turn opposite.
- As the road bears left, take the footpath to the right, opposite Westwood Motors, go through the metal “step-through” and head downhill, following the footpath through the woods.
- Go straight through the gate at the bottom and head down the steep hill towards Avoncliff.
- Pass between the “No Entry” signs, go down the steps to the right, walk under the aqueduct and you will see **The Cross Guns** straight ahead of you.

Directions – Section 2

The Cross Guns - The Inn at Freshford

- Heading away from The Cross Guns, pass back under the aqueduct, continue straight along the track with the river to your right and the large yellow building – Ancliff Square – to your left.
- Go through the kissing gate at the end of the track and head along the footpath, keeping the river to your right.
- Continue along the footpaths, through a field and beside some woods, always keeping the river to your right. You will pass through another three kissing gates before emerging into a large field, from where you will see **The Inn at Freshford** straight ahead of you.



THE TWO VALLEYS WALK

Start point: Inn at Freshford car park
O/S Ref: ST 791 600

Approx. Distance: 3.5 miles

Approx. Time: 1.5 hours

Terrain: Footpaths, fields, quiet country lanes

